



FULL CATALOG



THE LEADING WHOLESALE DISTRIBUTOR OF BUILDING MATERIALS IN THE MIDWEST





PRODUCT CATALOG

Welcome to our Product Catalog. We have compiled a comprehensive list of everything we stock and sell. It encompasses over 2,000 different products that are available every single day. Of course, we also have the ability to special order just about anything; if it's wood, we can source it.

We're a family-run company that's been in the wood products industry for over a hundred years, and we're currently on our third generation of family ownership and management.

Our whole philosophy is to source the best building materials in the world and provide quick and reliable access to them for any sized job, big or small.

Thank you for your support!



PAGE GUIDE

Introduction

1-5: Commodity Lumber Products

6-9: Pressure Treated & Fire Treated Lumber & Panels

10-15: Commodity Panels: OSB, Plywood & Specialty Panels

16-22: Boards and Pattern Stock

23-30: Engineered Wood Products & Accessories

31-39: James Hardie Siding, Trim, & Accessories

40-42: EasyTrim Reveals & Fast Plank

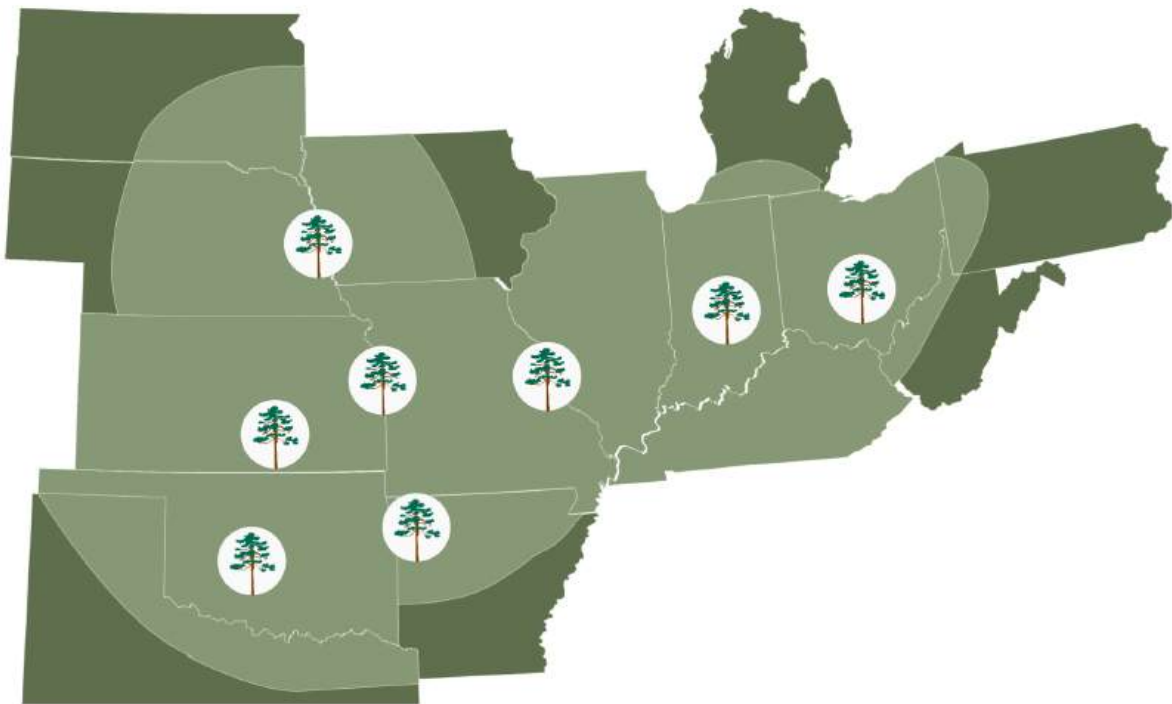
43: Typar Housewrap & Flashings





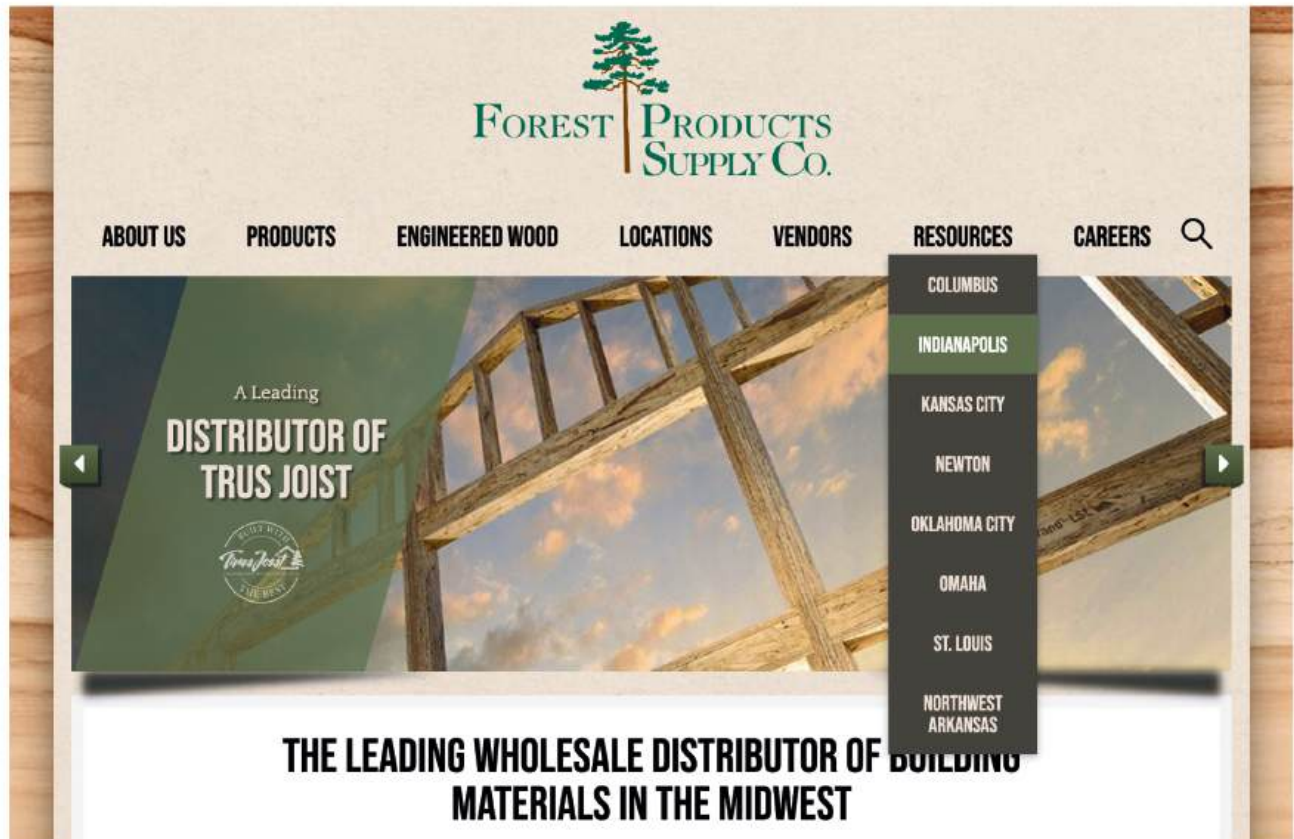
FAST FACTS:

- Awarded "Vendor of the Year" from Premier, Multi-location Lumber Yard
- 5 Sales Reps, 5 EWP Designers, 7 Drivers, 6 Yardmen
- Over 2,000 SKU's in Inventory and On Ground
- 8 Midwest Distribution Centers
- Family Owned and Operated



OUR WEBSITE

www.fp-supply.com/indianapolis-resources.html



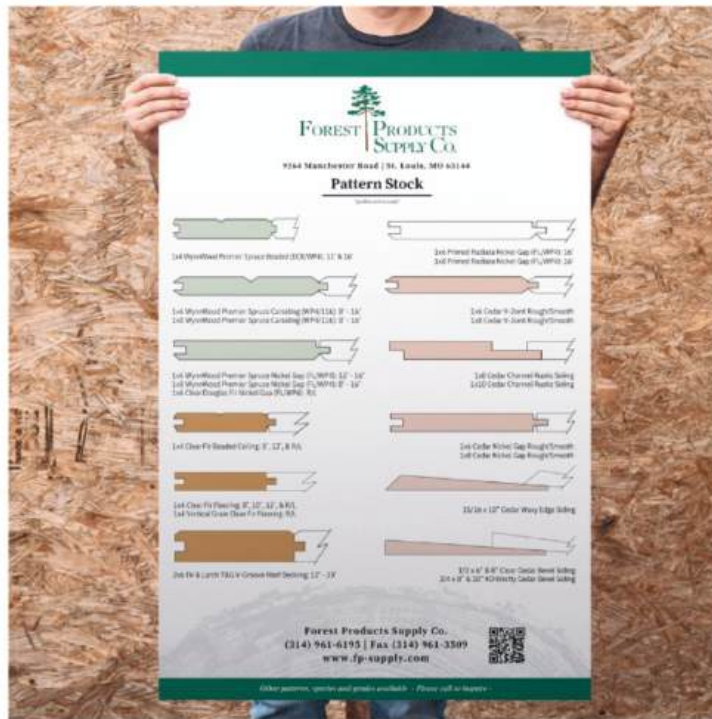
VISIT OUR WEBSITE FOR MORE INFORMATION ON ALL OF OUR PRODUCTS.

Go to www.fp-supply.com, and then go to resources and select Indianapolis.

Here you'll have detailed access to all of our products. Every product page includes relevant information you're looking for, including available sizes, photos, videos, PDF's of installation guides, product brochures, MSDS sheets, specifier's guides, and more.

The best part is that everything is designed for the dealer to be able to share with their customers, so we don't include any pricing on these pages. Use this as a selling tool and share these product pages and links with your customers to help close sales. It's also a mobile-friendly site so you can access this on a jobsite with a smartphone or tablet.

OUR POSTERS



We have created new posters intended for product store signage. Our new posters are designed to be both informative and eye-catching to help educate your customers and drive sales. They are available free of charge and are easy to put on a wall, corkboard, countertop, etc.

If you would like to request some posters for your store, go to www.fp-supply.com/in-fp-posters.html and fill out our online form or call us at (317) 357-8011. The posters measure 20" x 30" and feature a QR code that can be scanned that takes the customer to our website for more comprehensive information.

Available Posters:

- Pattern Stock
- Pine Plywood Siding
- Premium Boards
- WynnWood Boards
- James Hardie Siding
- James Hardie Artisan Siding
- Magnolia Home Collection
- EasyTrim
- Trus Joist TJI
- Trus Joist LVL Microllams
- Trus Joist Parallam PSL Beams
- TimberStrand LSL Framing

SPF STUDS & DIMENSIONAL LUMBER



Available Stud Sizes:

| Item | Unit Size | Premium | Selects/Market | Finger Joint |
|--------------|-----------|---------|----------------|--------------|
| 2x4x92-5/8" | 294 | ✓ | ✓ | ✓ |
| 2x4x96" | 294 | ✓ | | |
| 2x4x104-5/8" | 294 | ✓ | | ✓ |
| 2x4x116-5/8" | 294 | ✓ | ✓ | ✓ |
| 2x6x92-5/8" | 189 | ✓ | ✓ | ✓ |
| 2x6x96" | 189 | ✓ | | |
| 2x6x104-5/8" | 189 | ✓ | | ✓ |
| 2x6x116-5/8" | 189 | ✓ | | ✓ |

Available Dimensional Sizes:

| Item | Unit Size | Lengths | 4-Square | Hiline | #2&btr | Dunkley Prem |
|------|-----------|----------|----------|--------|--------|--------------|
| 2x4 | 294 | 8' - 20' | ✓ | ✓ | ✓ | ✓ |
| 2x6 | 189 | 8' - 20' | ✓ | ✓ | ✓ | ✓ |

YELLOW PINE DIMENSION LUMBER



Available Sizes:

| Item | Unit Size | Lengths | #1 YP | #2 YP | MSR 2400 |
|------|-----------|----------|-------|-------|----------|
| 2x4 | 208 | 8' - 20' | ✓ | ✓ | ✓ |
| 2x6 | 128 | 8' - 20' | ✓ | ✓ | ✓ |
| 2x8 | 96 | 8' - 20' | ✓ | ✓ | ✓ |
| 2x10 | 80 | 8' - 20' | ✓ | ✓ | ✓ |
| 2x12 | 64 | 8' - 20' | ✓ | ✓ | ✓ |

Features & Benefits:

- Superior strength to SPF and Douglas Fir; excellent for floor joists and roof trusses
- We carry the deepest inventory of MSR 2400 Yellow Pine
- Contact us for mill direct quotes

2X4X16 MERCER "SILVER BULLETS" SPF



Available Sizes:

| Item | Actual Size | Grade Stamp | Unit Size | Species | KD HT Stamp |
|------------------------------|--------------------------|-------------|------------|----------------------|-------------|
| <i>2x4x16 Silver Bullets</i> | <i>1.5" x 3.5" x 16'</i> | <i>#3</i> | <i>294</i> | <i>Norway Spruce</i> | <i>Yes</i> |

Features & Benefits:

- Excellent value for price
- Premium Norway Spruce fiber
- Excellent for plate framing, concrete forming, bracing, shoring, railing, purlins, packaging, and crating
- Vast majority of material within unit is premium 4-Square quality
- Standard US dimensions with paper wrapped bundles of 294 pieces

PREMIUM FURRING STRIPS



1x2x8



1x3x8



2x2x8

Available Sizes:

| Item | SKU | Unit Size | Grade | Species |
|-------------------|----------------|------------------|----------------|----------------|
| <i>1 x 2 x 8</i> | <i>128FSP</i> | <i>648</i> | <i>Premium</i> | <i>SPF</i> |
| <i>1 x 3 x 8</i> | <i>138FSP</i> | <i>960</i> | <i>Premium</i> | <i>SPF</i> |
| <i>1 x 3 x 12</i> | <i>1312FSP</i> | <i>648</i> | <i>Premium</i> | <i>SPF</i> |
| <i>2 x 2 x 8</i> | <i>228FSP</i> | <i>420</i> | <i>Premium</i> | <i>SPF</i> |
| <i>2 x 2 x 12</i> | <i>2212FSP</i> | <i>600</i> | <i>Premium</i> | <i>SPF</i> |

Features & Benefits:

- Premium grade with virtually no bark or wane
- Paper wrapped and sub-bundled
- Special order sizes and cuts are available in full unit quantities

LONG LENGTH HEM-FIR



Available Sizes:

| Nominal Size | Unit Size | Lengths | Grade | Species |
|---------------------|------------------|----------------|-------------------|----------------|
| <i>2x6</i> | <i>128</i> | <i>22'-28'</i> | <i>#2&btr</i> | <i>Hem Fir</i> |
| <i>2x8</i> | <i>96</i> | <i>22'-28'</i> | <i>#2&btr</i> | <i>Hem Fir</i> |
| <i>2x10</i> | <i>80</i> | <i>22'-28'</i> | <i>#2&btr</i> | <i>Hem Fir</i> |
| <i>2x12</i> | <i>64</i> | <i>22'-28'</i> | <i>#2&btr</i> | <i>Hem Fir</i> |

Features & Benefits:

- Excellent strength-to-weight ratio
- Available in long lengths up to 28'
- Great for rafters, floor joists, and beams
- Sold in job-pack quantities
- Solid timber, no finger joints

MCA TREATED LUMBER



Available Sizes:

| Item | Grade | Lengths | Treatment | Color | Unit Size |
|--------------|-----------------------|-----------------|---------------------------|--------------|------------------|
| <i>2x4</i> | <i>#1 Yellow Pine</i> | <i>8' - 16'</i> | <i>MCA Ground Contact</i> | <i>Green</i> | <i>104</i> |
| <i>2x6</i> | <i>#1 Yellow Pine</i> | <i>8' - 16'</i> | <i>MCA Ground Contact</i> | <i>Green</i> | <i>64</i> |
| <i>2x8</i> | <i>#1 Yellow Pine</i> | <i>8' - 16'</i> | <i>MCA Ground Contact</i> | <i>Green</i> | <i>48</i> |
| <i>2x10</i> | <i>#1 Yellow Pine</i> | <i>8' - 16'</i> | <i>MCA Ground Contact</i> | <i>Green</i> | <i>40</i> |
| <i>2x12</i> | <i>#1 Yellow Pine</i> | <i>8' - 16'</i> | <i>MCA Ground Contact</i> | <i>Green</i> | <i>32</i> |
| <i>5/4x6</i> | <i>Premium</i> | <i>8' - 16'</i> | <i>MCA Ground Contact</i> | <i>Green</i> | <i>96</i> |
| <i>4x4</i> | <i>#1 Yellow Pine</i> | <i>8' - 16'</i> | <i>MCA Ground Contact</i> | <i>Green</i> | <i>65</i> |
| <i>4x6</i> | <i>#1 Yellow Pine</i> | <i>8' - 16'</i> | <i>MCA Ground Contact</i> | <i>Green</i> | <i>32</i> |
| <i>6x6</i> | <i>#1 Yellow Pine</i> | <i>8' - 16'</i> | <i>MCA Ground Contact</i> | <i>Green</i> | <i>16</i> |

Features & Benefits:

- Available in less than unit and job-pack quantities
- All MCA treated lumber is a .15 MCA Ground Contact treatment
- Light green treatment that naturally fades with time

PRESSURE TREATED PLYWOOD



Available Sizes:

| Item | Actual Thickness | Panel Size | Unit Size |
|---------------------|-------------------------|-------------------|------------------|
| <i>1/2" Treated</i> | <i>15/32"</i> | <i>4' x 8'</i> | <i>70</i> |
| <i>5/8" Treated</i> | <i>19/32"</i> | <i>4' x 8'</i> | <i>58</i> |
| <i>3/4" Treated</i> | <i>23/32"</i> | <i>4' x 8'</i> | <i>46</i> |

Features & Benefits:

- Prevents rot and decay
- Excellent for exterior or moist and damp applications
- Available in less than unit quantities

FIRE TREATED LUMBER



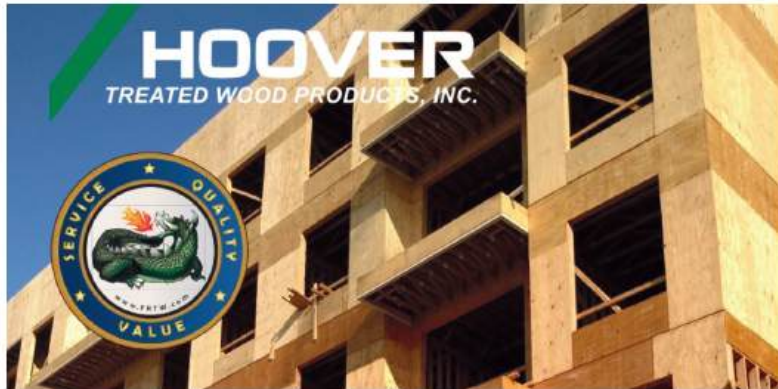
Available Sizes:

| Item | Lengths | Grade | Application |
|-----------------------------------|--------------------------|-----------------------|-----------------|
| <i>2x4 Interior Fire Treated</i> | <i>8', 10', 12', 16'</i> | <i>#2 Yellow Pine</i> | <i>Interior</i> |
| <i>2x6 Interior Fire Treated</i> | <i>8', 10', 12', 16'</i> | <i>#2 Yellow Pine</i> | <i>Interior</i> |
| <i>2x8 Interior Fire Treated</i> | <i>12', 16'</i> | <i>#2 Yellow Pine</i> | <i>Interior</i> |
| <i>2x10 Interior Fire Treated</i> | <i>12', 16'</i> | <i>#2 Yellow Pine</i> | <i>Interior</i> |
| <i>2x12 Interior Fire Treated</i> | <i>12', 16'</i> | <i>#2 Yellow Pine</i> | <i>Interior</i> |

Features & Benefits:

- Fully pressure impregnated treatment; no surface coatings
- All boards are individually stamped with fire treatment and rating
- Exterior rated available via special order

FIRE TREATED PLYWOOD



PYRO-GUARD®

EXTERIOR FIRE-X®

Available Sizes:

| Item | Application | Panel Size | Treatment | Edge Profile |
|--------------|-------------|------------|----------------|-----------------|
| 1/2" CDX | Interior | 4' x 8' | Fire-Retardant | Square Edge |
| 1/2" AC | Interior | 4' x 8' | Fire-Retardant | Square Edge |
| 5/8" CDX | Interior | 4' x 8' | Fire-Retardant | Square Edge |
| 3/4" CDX | Interior | 4' x 8' | Fire-Retardant | Square Edge |
| 3/4" AC | Interior | 4' x 8' | Fire-Retardant | Square Edge |
| 3/4" SIF T&G | Interior | 4' x 8' | Fire-Retardant | Tongue & Groove |

Features & Benefits:

- Fully pressure impregnated treatment, no top-coatings or false protection
- Class A Fire Treated
- When exposed to fire, non-combustible gas and water vapor are produced and a layer of protective char forms

OSB PANELS



| Item | Dimension | Type | Unit Size | Typical MFR |
|--------------|------------------|-----------------------|------------------|---------------------------|
| <i>7/16"</i> | <i>4 x 8</i> | <i>Sq Edge</i> | <i>78</i> | <i>Weyco & Martco</i> |
| <i>7/16"</i> | <i>4 x 9</i> | <i>Sq Edge</i> | <i>82</i> | <i>Martco</i> |
| <i>7/16"</i> | <i>4 x 10</i> | <i>Sq Edge</i> | <i>87</i> | <i>Martco</i> |
| <i>1/2"</i> | <i>4 x 8</i> | <i>Sq Edge</i> | <i>68</i> | <i>Weyco</i> |
| <i>5/8"</i> | <i>4 x 8</i> | <i>Sq Edge</i> | <i>54</i> | <i>Weyco</i> |
| <i>3/4"</i> | <i>4 x 8</i> | <i>T & G</i> | <i>48</i> | <i>Weyco</i> |
| <i>3/4"</i> | <i>4 x 8</i> | <i>Sq Edge</i> | <i>48</i> | <i>Weyco</i> |
| <i>3/4"</i> | <i>4 x 8</i> | <i>Gold T & G</i> | <i>48</i> | <i>Weyco</i> |
| <i>3/4"</i> | <i>4 x 8</i> | <i>Diamond</i> | <i>48</i> | <i>Weyco</i> |

EDGE GOLD T&G SUBFLOOR



Available Sizes:

| Item | Panel Size | Unit Size | Fastner Grid | Drainage System |
|----------|------------|-----------|--------------|-----------------|
| 3/4" T&G | 4' x 8' | 48 pcs | Yes | Yes |

Special Order:

| | | | | |
|------------|---------|--------|-----|-----|
| 7/8" T&G | 4' x 8' | 39 pcs | Yes | Yes |
| 1-1/8" T&G | 4' x 8' | 30 pcs | Yes | Yes |

Features & Benefits:

- Pound for pound the best bang for your buck in sub-flooring
- 50 Year Warranty and a 200 day no-sand guarantee
- Down Pore Drainage System ensures that water properly drains, protecting against edge swell and sanding before installing hardwood flooring or tile
- Fastener Grid that ships face-up, ready for easy and accurate installation
- Roughly 20% less than the cost of Advantech

DIAMOND T&G SUBFLOOR



Available Sizes:

| Item | Panel Size | Unit Size | Warranty | Drainage System |
|------------------------------|----------------|-----------|----------------|-----------------|
| <i>3/4 Diamond Sheathing</i> | <i>4' x 8'</i> | <i>48</i> | <i>50 Year</i> | <i>Yes</i> |

Features & Benefits:

- Engineered to compete with the best floor panels on the market in strength, nail retention and weather resistance.
- Builders use our easy-fit tongue and-groove edge for hassle-free installations.
- Down Pore® self-draining technology reduces rainwater ponding on the jobsite.
- Use in conjunction with Trus Joist® TJI® joists for additional TJ-Pro™ Rating points.
- Buy with confidence: limited lifetime warranty, a 500-day 'no-sand' guarantee, and backed by Weyerhaeuser's 118-year legacy of quality and customer service.
- Structural 1 Rated.

YELLOW PINE PLYWOOD



Available Sizes:

| Item | Thickness | Size | Unit Size | Species |
|-----------------------------------|------------------|----------------|------------------|--------------------|
| <i>3/8" PRS</i> | <i>11/32"</i> | <i>4' x 8'</i> | <i>90</i> | <i>Yellow Pine</i> |
| <i>1/2" PRS 4-Ply</i> | <i>19/32"</i> | <i>4' x 8'</i> | <i>70</i> | <i>Yellow Pine</i> |
| <i>5/8" PRS 4-Ply</i> | <i>19/32"</i> | <i>4' x 8'</i> | <i>56</i> | <i>Yellow Pine</i> |
| <i>3/4" PRS</i> | <i>19/32"</i> | <i>4' x 8'</i> | <i>46</i> | <i>Yellow Pine</i> |
| <i>3/4" Sturd-I-Floor T&G</i> | <i>19/32"</i> | <i>4' x 8'</i> | <i>48</i> | <i>Yellow Pine</i> |
| <i>3/4" BBOES Plyform</i> | <i>23/32"</i> | <i>4' x 8'</i> | <i>50</i> | <i>Yellow Pine</i> |

Features & Benefits:

- Premium mill quality
- GP, Hunt, and Weyerhaeuser stock
- Mill direct quotes available

SANDED PLYWOOD

AC Radiata



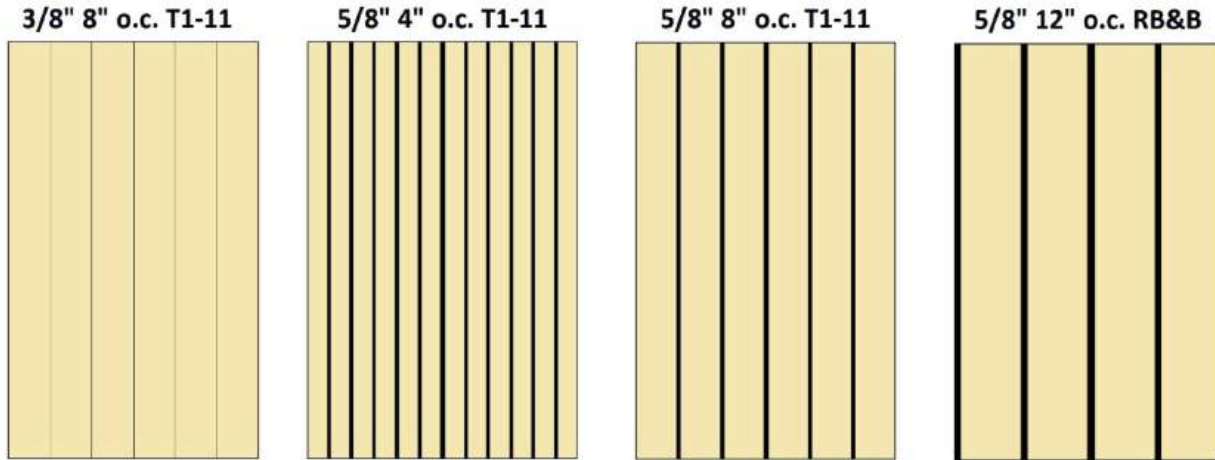
Available Sizes:

| | | | | | |
|------------------------|---------------|----------------|------------|---------------------|-----------|
| <i>1/4" AC Radiata</i> | <i>1/4"</i> | <i>4' x 8'</i> | <i>160</i> | <i>Radiata Pine</i> | <i>AC</i> |
| <i>3/8" AC Radiata</i> | <i>11/32"</i> | <i>4' x 8'</i> | <i>108</i> | <i>Radiata Pine</i> | <i>AC</i> |
| <i>1/2" AC Radiata</i> | <i>15/32"</i> | <i>4' x 8'</i> | <i>80</i> | <i>Radiata Pine</i> | <i>AC</i> |
| <i>5/8" AC Radiata</i> | <i>19/32"</i> | <i>4' x 8'</i> | <i>65</i> | <i>Radiata Pine</i> | <i>AC</i> |
| <i>3/4" AC Radiata</i> | <i>23/32"</i> | <i>4' x 8'</i> | <i>49</i> | <i>Radiata Pine</i> | <i>AC</i> |

Features & Benefits:

- Excellent for painting and finished work like cabinetry and shelving
- Available in less than unit quantities

PINE PLYWOOD SIDING



Available Sizes:

| Item | Thickness | Panel Size | Unit Size | Species | Grade |
|-------------------------------|---------------|----------------|------------|---------------------|----------------|
| <i>3/8" 2" o.c. Beadboard</i> | <i>11/32"</i> | <i>4' x 8'</i> | <i>108</i> | <i>Radiata Pine</i> | <i>Premium</i> |
| <i>3/8" 1.6" o.c.</i> | <i>11/32"</i> | <i>4' x 8'</i> | <i>90</i> | <i>Pine</i> | <i>Premium</i> |
| <i>5/8" 4" o.c. T1-11</i> | <i>19/32"</i> | <i>4' x 8'</i> | <i>29</i> | <i>Pine</i> | <i>Premium</i> |
| <i>5/8" 4" o.c. T1-11</i> | <i>19/32"</i> | <i>4' x 8'</i> | <i>29</i> | <i>Pine</i> | <i>Deco</i> |
| <i>5/8" 8" o.c. T1-11</i> | <i>19/32"</i> | <i>4' x 8'</i> | <i>29</i> | <i>Pine</i> | <i>Premium</i> |
| <i>5/8" 8" o.c. T1-11</i> | <i>19/32"</i> | <i>4' x 8'</i> | <i>29</i> | <i>Pine</i> | <i>Deco</i> |
| <i>5/8" 12" o.c. RB&B</i> | <i>19/32"</i> | <i>4' x 8'</i> | <i>29</i> | <i>Pine</i> | <i>Deco</i> |

Features & Benefits:

- Easy to install shiplap panels
- Fully approved for exterior siding
- Available in premium grade, and less than unit quantities
- Premium will have six repair patches or less and be both painted or stained

BOARDS AND PATTERN STOCK

We've developed a portfolio of high-quality boards and pattern stock that are well designed, affordable, and easy to sell.

The WynnWood Boards and Pattern Stock Advantage

- Premium Canadian ESLP that supersedes standard #2 grading rules
- A 1/16th micro-eased edge on all S4S boards, and the highest quality finish of any board or pattern stock in North America
- Convenient unit sizes and excellent packaging and sub-bundling
- The widest mix of available product and pattern for any conceivable project



Boards

- Premium #2 Canfor Wynnwood Premier



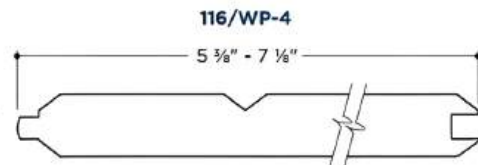
Nickel Gap/V-Groove

- Premium #2 WynnWood Premier
- Finger Jointed Double Primed Radiata Pine



Carsiding

- Premium #2 WynnWood Premier



CANFOR WYNNWOOD BOARDS

WYNNWOOD PREMIER

SPECIES: ESLP GRADE STAMP: 2COM & BTR
 MOISTURE RATING: KD-HT

THIS IS OUR HIGH LINE 2 COM & BTR GRADE.
 WHEN COMPARED TO NLGA 2 COM & BTR, WYNNWOOD PREMIER HAS:

95% WANE FREE | 90% STAIN FREE | 50% LESS TOTAL SPLIT LENGTH



WYNNWOOD CLASSIC

SPECIES: SPF GRADE STAMP: NONE
 MOISTURE RATING: KD-HT

THIS IS OUR HIGH LINE #3 GRADE.
 WHEN COMPARED TO NLGA #3, WYNNWOOD CLASSIC HAS:

50% LESS WANE | 50% LESS SKIP | 50% LESS SPLIT



Available Sizes:

| Item | Lengths | Units Size | Grades | Finish | Species |
|------|----------|------------|--------------------|----------------|---------|
| 1x4 | 8' - 16' | 588 | Premier or Classic | S4S Eased Edge | ESLP |
| 1x6 | 8' - 16' | 378 | Premier or Classic | S4S Eased Edge | ESLP |
| 1x8 | 8' - 16' | 294 | Premier or Classic | S4S Eased Edge | ESLP |
| 1x10 | 8' - 16' | 210 | Premier or Classic | S4S Eased Edge | ESLP |
| 1x12 | 8' - 16' | 168 | Premier or Classic | S4S Eased Edge | ESLP |

Features & Benefits:

- The highest quality finish of any board in North America
- Engelmann Spruce and Lodgepole Pine mix; small and limited knot structure
- Supersedes NLGA or WWPA grades with 50% less wane, almost no blue stain and strict limits on end splits.
- Micro-eased 1/16th-inch radius edge
- All boards are end waxed and stamped KDHT



CLAYMARK PRIMED FINGER JOINT RADIATA PINE



Claymark Centurion Exterior/Interior Features & Benefits:

- Imported New Zealand Radiata Pine
- 100% acrylic primer and undercoat
- Tru-Core weather treatment protects for 50 years against decay, rot and termites
- Excellent for exterior and interior trim

Claymark Interior Features & Benefits:

- Imported New Zealand Radiata Pine
- Surfaced on 4 sides with premium Gesso coating
- Finished with premium acrylic primer ready to paint without additional sanding
- Excellent for interior trim

CLAYMARK

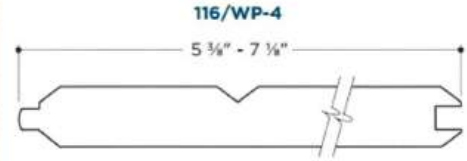
PRIMED FINGER JOINT RADIATA PINE

| Centurion Grade | Unit Size | Species | Pattern |
|--------------------------------------|------------------|---------------------|---------------------|
| <i>1x4x16 Primed Treated</i> | 252 | <i>Radiata Pine</i> | <i>S4S</i> |
| <i>1x6x16 Primed Treated</i> | 147 | <i>Radiata Pine</i> | <i>S4S</i> |
| <i>1x8x16 Primed Treated</i> | 105 | <i>Radiata Pine</i> | <i>S4S</i> |
| <i>1x12x16 Primed Treated</i> | 84 | <i>Radiata Pine</i> | <i>S4S</i> |
| <i>5/4x4x16 Primed Treated</i> | 156 | <i>Radiata Pine</i> | <i>S4S</i> |
| <i>5/4x6x16 Primed Treated</i> | 91 | <i>Radiata Pine</i> | <i>S4S</i> |
| <i>5/4x8x16 Primed Treated</i> | 65 | <i>Radiata Pine</i> | <i>S4S</i> |
| <i>5/4x10x16 Primed Treated</i> | 52 | <i>Radiata Pine</i> | <i>S4S</i> |
| <i>5/4x12x16 Primed Treated</i> | 52 | <i>Radiata Pine</i> | <i>S4S</i> |
| <i>1x6x16 WP4/E&CB Centurion</i> | 147 | <i>Radiata Pine</i> | <i>WP4/E&CB</i> |
| <i>1x8x16 WP4/E&CB Centurion</i> | 105 | <i>Radiata Pine</i> | <i>WP4/E&CB</i> |
| <i>1x4x16 Centurion S12SE</i> | 252 | <i>Radiata Pine</i> | <i>S12SE</i> |
| <i>1x6x16 Centurion S12SE</i> | 147 | <i>Radiata Pine</i> | <i>S12SE</i> |
| <i>1x8x16 Centurion S12SE</i> | 105 | <i>Radiata Pine</i> | <i>S12SE</i> |
| <i>1x12x16 Centurion S12SE</i> | 84 | <i>Radiata Pine</i> | <i>S12SE</i> |

| Centurion Grade | Unit Size | Species | Pattern |
|---|------------------|---------------------|-------------------|
| <i>1x6x16 Nickel Gap Treated Primed Centurion</i> | 147 | <i>Radiata Pine</i> | <i>Nickel Gap</i> |
| <i>1x8x16 Nickel Gap Treated Primed Centurion</i> | 105 | <i>Radiata Pine</i> | <i>Nickel Gap</i> |

| Interior Grade | Unit Size | Species |
|--|------------------|---------------------|
| <i>1x4x16 Primed Radiata FJ</i> | 456 | <i>Radiata Pine</i> |
| <i>1x6x16 Primed Radiata FJ</i> | 266 | <i>Radiata Pine</i> |
| <i>1x8x16 Primed Radiata FJ</i> | 228 | <i>Radiata Pine</i> |
| <i>1x12x16 Primed Radiata FJ</i> | 152 | <i>Radiata Pine</i> |
| <i>1x6-16 Primed Nickel Gap with WP/4 back</i> | 266 | <i>Radiata Pine</i> |
| <i>1x8-16 Primed Nickel Gap with WP/4 back</i> | 228 | <i>Radiata Pine</i> |

WP4/116 CARSIDING



| Item | Lengths | Unit Size | Species | Grade/Finish |
|---------------|----------|-----------|--------------|--------------|
| 1x6 Carsiding | 8' - 16' | 180 | Radiata Pine | #2 Premier |
| 1x8 Carsiding | 8' - 16' | 180 | Radiata Pine | #2 Premier |

CLEAR PINE BOARDS



| Item | Lengths | Unit Size | Species | Grade/Finish |
|------|---------|-----------|--------------|--------------|
| 1x4 | 16' | 240 | Radiata Pine | Clear |
| 1x6 | 16' | 140 | Radiata Pine | Clear |
| 1x8 | 16' | 100 | Radiata Pine | Clear |
| 1x10 | 16' | 80 | Radiata Pine | Clear |
| 1x12 | 16' | 80 | Radiata Pine | Clear |

NICKEL GAP SHIPLAP



1x6 Shiplap

5" Exposure

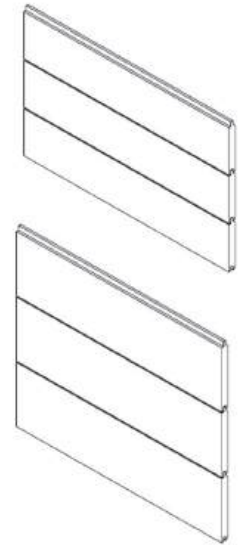
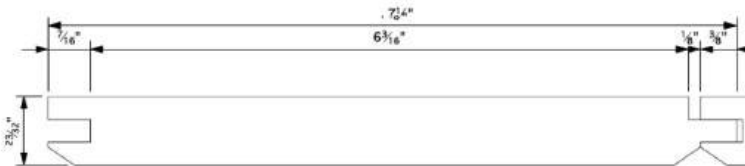
240 LF per 100 square feet



1x8 Shiplap

6 3/4" Exposure

180 LF per 100 square feet



Available Sizes:

| Item | Lengths | Unit Size | Exposure | Coverage | Grade | Finish |
|-------------------------|-----------|-----------|----------|-----------|------------------|---------------|
| 1x6 Primed Nickel Gap | 16' | 63 | 5" | 240 LF/SQ | Clear FJ Radiata | Double Primed |
| 1x8 Primed Nickel Gap | 16' | 45 | 6.75" | 180 LF/SQ | Clear FJ Radiata | Double Primed |
| 1x6 Raw Pine Nickel Gap | 16' | 180 | 5" | 240 LF/SQ | #2 Premier | Raw Pine |
| 1x8 Raw Pine Nickel Gap | 12' & 16' | 140 | 6.75" | 180 LF/SQ | #2 Premier | Raw Pine |

Features & Benefits:

- Raw Pine product is a #2 White Pine; can be stained, whitewashed, or painted
- Primed product is a Gesso coated and acrylic primed finger jointed Radiata Pine

INDUSTRIAL BOARDS



Available Sizes:

| Item | Lengths | Mill | Grade | Species | HT Stamp |
|------|---------|----------|-------|------------|----------|
| 1x4 | 8' | WynnWood | #4 + | White Wood | Yes |
| 1x4 | 16' | WynnWood | #4 + | White Wood | Yes |

Features & Benefits:

- A mill downfall grade that contains a good mix of #3 and even #2 grade boards
- 1x4 is an excellent solution for crating, roof purlins, and concrete forming
- Excellent price and value compared to #3 boards
- All boards are KDHT stamped

ENGINEERED WOOD PRODUCTS



Trus Joist Engineered Wood Products are the #1 rated I-Joist by Builder Magazine, and have been for 15 years running. They are the only brand with a full suite of engineered wood products including I-Joists, LVL Microllam, PSL Parallam, and LSL Timberstrand.

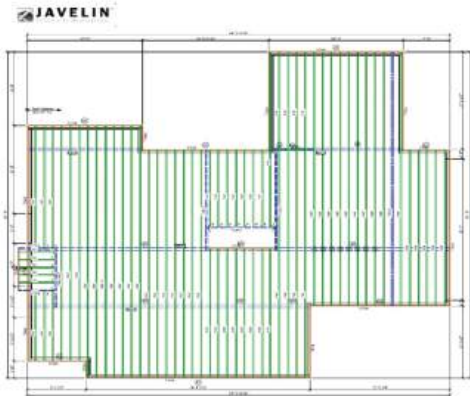
From performance, to assortment, to quality, Trus Joist is the clear market leader and has the proven performance that builders trust nationwide. Additionally, we have a team of designers that can help with questions, design, and trouble-shooting from start to finish.

OUR SERVICES

CONSULTING

DESIGN

JOBSITE DELIVERY



TRUSJOIST I-JOISTS



Available Sizes:

| Series | Flange Size | Depth | Unit Size | L/480 Span* |
|---------|-------------|---------|-----------|-------------|
| TJI 110 | 1-3/4" | 9-1/2" | 43 | 15'-6" |
| TJI 110 | 1-3/4" | 11-7/8" | 43 | 18'-5" |
| TJI 110 | 1-3/4" | 14" | 43 | 20'-11" |
| TJI 210 | 2-1/16" | 11-7/8" | 37 | 19'-3" |
| TJI 210 | 2-1/16" | 14" | 37 | 21'-10" |
| TJI 360 | 2-5/16" | 11-7/8" | 35 | 20'-11" |
| TJI 360 | 2-5/16" | 14" | 35 | 23'-8" |
| TJI 360 | 2-5/16" | 16" | 35 | 26'-3" |
| TJI 560 | 3-1/2" | 11-7/8" | 23 | 23'-8" |
| TJI 560 | 3-1/2" | 14" | 23 | 26'-10" |
| TJI 560 | 3-1/2" | 16" | 23 | 29'-8" |

Features & Benefits:

- The #1 rated I-Joist by Builder Magazine for 15 years running
- LVL flange for superior fastening power and squeak-free floor
- Pre-notched holes for easy to run mechanicals
- Multiple depths and flange widths for any conceivable design
- Additional depths and series available including 560 "D" series.

MICROLLAM LVL



Available Sizes:

| Depth | Width | Lengths | E-Value | Overlay | Unit Size |
|---------|--------|---------|---------|-----------|-----------|
| 7-1/4" | 1-3/4" | 12-48' | 2.0E | Watershed | 36 |
| 9-1/4" | 1-3/4" | 12-48' | 2.0E | Watershed | 30 |
| 9-1/2" | 1-3/4" | 12-48' | 2.0E | Watershed | 30 |
| 11-1/4" | 1-3/4" | 12-48' | 2.0E | Watershed | 24 |
| 11-7/8" | 1-3/4" | 12-48' | 2.0E | Watershed | 24 |
| 14" | 1-3/4" | 12-48' | 2.0E | Watershed | 18 |
| 16" | 1-3/4" | 12-48' | 2.0E | Watershed | 18 |
| 18" | 1-3/4" | 12-48' | 2.0E | Watershed | 12 |
| 20" | 1-3/4" | 12-48' | 2.0E | Watershed | 12 |
| 24" | 1-3/4" | 12-48' | 2.0E | Watershed | 12 |

Features & Benefits:

- Waxy watershed overlay finish that beads water and improves long-term storage
- A large mix of depths and lengths for any conceivable application
- Available beam sizing and design by our in-house team

TIMBERSTRAND LSL HEADERS & BEAMS



Available Sizes:

| Width | Depth | Lengths | E-Value | Unit Size |
|--------|---------|----------------|---------|-----------|
| 1-3/4" | 11-7/8" | 14, 20, 24, 48 | 1.55E | 24 |
| 1-3/4" | 14" | 14, 18, 22, 48 | 1.55E | 18 |
| 3-1/2" | 4-3/8" | 16' | 1.3 E | 30 |

Features & Benefits:

- Perfectly straight – no bowing, twisting, or warping
- A less expensive alternative to LVL beams and headers
- A larger allowable hole zone for mechanicals like plumbing and electrical
- Available beam sizing and design by our in-house team

TIMBERSTRAND LSL FRAMING



Available Sizes:

| Item | SKU | Actual Size | Lengths | E-Value |
|---------------|-----------|-----------------|-----------|---------|
| 2 x 4 Stud | 249258TS | 1-1/2" x 3-1/2" | 92-5/8" | 1.3 E |
| 2 x 6 Stud | 269258TS | 1-1/2" x 5-1/2" | 92-5/8" | 1.3 E |
| 2 x 4 Stud | 2410458TS | 1-1/2" x 3-1/2" | 104-5/8" | 1.3 E |
| 2 x 6 Stud | 2610458TS | 1-1/2" x 5-1/2" | 104-5/8" | 1.3 E |
| 2 x 4 Stud | 2411658TS | 1-1/2" x 3-1/2" | 116-5/8" | 1.3 E |
| 2 x 6 Stud | 2611658TS | 1-1/2" x 5-1/2" | 116-5/8" | 1.3 E |
| 2 x 4 Framing | 24_TS | 8' - 20' | 12' - 48' | 1.3 E |
| 2 x 6 Framing | 26_TS | 8' - 20' | 12' - 48' | 1.3 E |
| 2 x 8 Framing | 28_TS | 8' - 20' | 12' - 48' | 1.3 E |

Features & Benefits:

- Perfectly straight – no bowing, twisting, or warping
- A major component in tall walls and two story rooms
- Excellent for kitchens and bathrooms where you need perfectly straight walls
- Helps resist tile, grout, and sheetrock cracks and ensures that cabinets, doors and windows work smoothly and hang straight

PARALLAM PSL



Available Sizes:

| Item | Lengths | Unit Size | E-Value | Application |
|------------------|----------|-----------|---------|-------------|
| 3-1/2" x 9-1/4" | 8' - 48' | 10 | 2.0 E | Beams |
| 3-1/2" x 11-7/8" | 8' - 48' | 8 | 2.0 E | Beams |
| 3-1/2" x 14" | 8' - 48' | 6 | 2.0 E | Beams |
| 3-1/2" x 16" | 8' - 48' | 6 | 2.0 E | Beams |
| 5-1/4" x 9-1/4" | 8' - 48' | 5 | 2.0 E | Beams |
| 5-1/4" x 9-1/2" | 8' - 48' | 5 | 2.0 E | Beams |
| 5-1/4" x 11-7/8" | 8' - 48' | 4 | 2.0 E | Beams |
| 5-1/4" x 14" | 8' - 48' | 3 | 2.0 E | Beams |
| 5-1/4" x 16" | 8' - 48' | 3 | 2.0 E | Beams |
| 5-1/4" x 18" | 8' - 48' | 2 | 2.0 E | Beams |

| Item | Lengths | Unit Size | E-Value | Application |
|-----------------|----------------|-----------|---------|-----------------|
| 3-1/2" x 3-1/2" | 10', 12' | 12 | 1.8 E | Columns & Posts |
| 3-1/2" x 5-1/4" | 10, 12, 14, 24 | 8 | 1.8 E | Columns & Posts |
| 3-1/2" x 7" | 10, 12, 14, 24 | 6 | 1.8 E | Columns & Posts |
| 5-1/4" x 5-1/4" | 10, 12, 14, 24 | 8 | 1.8 E | Columns & Posts |
| 5-1/4" x 7" | 10, 12, 14, 24 | 6 | 1.8 E | Columns & Posts |
| 7" x 7" | 12, 24 | 6 | 1.8 E | Columns & Posts |

- Parallams are the biggest and strongest beams in the EWP family, and are made using parallel strands of lumber that are pressed and glued to form one solid beam
- One piece install, no need for multiple plies and fastening

TREATED PARALLAM PLUS PSL



Available Sizes:

| Item | Lengths | Unit Size | Application |
|-------------------------|----------------------|------------------|--------------------|
| <i>3-1/2" x 9-1/4"</i> | <i>36', 40', 48'</i> | <i>5</i> | <i>Exterior</i> |
| <i>3-1/2" x 11-7/8"</i> | <i>36', 40', 48'</i> | <i>4</i> | <i>Exterior</i> |
| <i>3-1/2" x 14"</i> | <i>36', 40', 48'</i> | <i>3</i> | <i>Exterior</i> |
| <i>3-1/2" x 16"</i> | <i>40', 48'</i> | <i>3</i> | <i>Exterior</i> |
| <i>5-1/4" x 9-1/4"</i> | <i>36', 40', 48'</i> | <i>5</i> | <i>Exterior</i> |
| <i>5-1/4" x 11-7/8"</i> | <i>36', 40', 48'</i> | <i>4</i> | <i>Exterior</i> |
| <i>5-1/4" x 14"</i> | <i>36', 40', 48'</i> | <i>3</i> | <i>Exterior</i> |
| <i>5-1/4" x 16"</i> | <i>40', 48'</i> | <i>3</i> | <i>Exterior</i> |
| <i>3-1/2" x 5-1/4"</i> | <i>48'</i> | <i>8</i> | <i>Exterior</i> |
| <i>5-1/4" x 5-1/4"</i> | <i>40', 48'</i> | <i>8</i> | <i>Exterior</i> |

Treated Parallam® Plus PSL is perfect for framing decks, retaining walls, carports, pool enclosures, among other structural framing applications where the wood comes in direct contact with the ground or moisture.

SIMPSON HANGERS

SKU/Model

Description

TJI 110 Series, Single-Ply LVL and LSL

| | |
|-----------------|--|
| HUS 1.81/10 | 1-3/4" x 9-1/4" Flush Face Mount Hanger |
| HUCQ1.81/11-SDS | 1-3/4" x 11-7/8" Concealed Mount Hanger |
| IUS 1.81/9.5 | 1-3/4" x 9-1/2" Flush Face Mount Hanger |
| ITS 1.81/11.88 | 1-3/4" x 11-7/8" Top Mount Hanger |
| ITS 1.81/14 | 1-3/4" x 14" Top Mount Hanger |
| IUS 1.81/11.88 | 1-3/4" x 11-7/8" Flush Face Mount Hanger |
| IUS 1.81/14 | 1-3/4" x 14" Flush Face Mount Hanger |
| U14 | 1-13/16" x 10-1/4" U-Face Mount Joist Hanger |

ITS Top Mount Hanger



TJI 210 Series

| | |
|----------------|--|
| ITS 2.06/11.88 | 2-1/16" x 11-7/8" Top Mount Hanger |
| ITS 2.06/14 | 2-1/16" x 14" Top Mount Hanger |
| IUS 2.06/11.88 | 2-1/16" x 11-7/8" Flush Face Mount Hanger |
| IUS 2.06/14 | 2-1/16" x 14" Flush Face Mount Hanger |
| MIT4.28/11.88 | 4-1/8" x 11-7/8" Top Mount Double Hanger |
| MIU 4.28/11 | 4-1/8" x 11-7/8" Flush Mount Double Hanger |
| MIU 4.28/14 | 4-1/8" x 14" Flush Mount Double Hanger |

TJI 360 Series

| | |
|----------------|--|
| ITS 2.37/11.88 | 2-5/16" x 11-7/8" Top Mount Hanger |
| ITS 2.37/14 | 2-5/16" x 14" Top Mount Hanger |
| ITS 2.37/16 | 2-5/16" x 16" Top Mount Hanger |
| IUS 2.37/11.88 | 2-5/16" x 11-7/8" Flush Face Mount Hanger |
| IUS 2.37/14 | 2-5/16" x 14" Flush Face Mount Hanger |
| IUS 2.37/16 | 2-5/16" x 16" Flush Face Mount Hanger |
| MIU 4.75/11 | 4-3/4" x 11-7/8" Flush Mount Double Hanger |
| MIU 4.75/14 | 4-3/4" x 14" Flush Mount Double Hanger |

IUS Face Mount Hanger



TJI 560 Series, 2-Ply LVL, LSL, PSL

| | |
|----------------|---|
| HHUS410 | 3-1/2" x 9" Flush Face Mount Hanger |
| HUC410 | 3-1/2" x 9-1/4" Concealed Flush Face Mount Hanger |
| HGUS410 | 3-5/8" x 9-1/16" Face Mount Double Hanger |
| HGUS412 | 3-5/8" x 10-7/16" Face Mount Double Hanger |
| HGUS414 | 3-5/8" x 12-7/16" Face Mount Double Hanger |
| HUC412 | 3-9/16" x 10-3/8" Concealed Flush Face Mount Hanger |
| ITS 3.56/11.88 | 3-1/2" x 11-7/8" Top Mount Hanger |
| IUS 3.56/11.88 | 3-1/2" x 11-7/8" Face Mount Hanger |
| IUS 3.56/14 | 3-1/2" x 14" Face Mount Hanger |
| IUS 3.56/16 | 3-1/2" x 16" Face Mount Hanger |
| U414 | 3-9/16" x 10" U-Face Mount Joist Hanger |

HHUS Face Mount



5-1/4" Wide 3-Ply LVL/PSL Hangers

| | |
|-------------|--|
| HHUS5.50/10 | 5-1/4" 3-Ply Flush Face Mount Hanger 9-1/4" - 14" |
| HGUS5.50/10 | 5-1/4" 3-Ply Flush Face Mount Hanger 9-1/4" - 14" |
| HGUS5.50/12 | 5-1/4" 3-Ply Flush Face Mount Hanger 11-7/8" - 16" |
| HGUS5.50/14 | 5-1/4" 3-Ply Flush Face Mount Hanger 14" - 18" |

7" Wide 4-Ply LVL/PSL Hangers

| | |
|-------------|--|
| HGUS7.25/10 | 7" 4-ply Flush Face Hanger 9-1/4" - 14" |
| HHUS7.25/10 | 7" 4-ply Flush Face Hanger 11-7/8" - 14" |

JAMES HARDIE FIBER CEMENT SIDING



James Hardie



STATEMENT COLLECTION

The statement collection is James Hardie's pre-finished siding and trim collection in their core colors. All statement items are in stock and ready for prompt shipment, including lap siding, shingles, panels, trim and soffit.

PRIMED COLLECTION

The primed collection is James Hardie's siding and trim collection in a basic primed finish. Primed collection items are available in wide variety of substrates.

DREAM COLLECTION

The dream collection is James Hardie's custom color collection. All of James Hardie's substrates are available in over 700 different colors and can be special ordered to the piece.

MAGNOLIA COLLECTION

The Magnolia collection is an exclusive color collection hand picked by Joanna Gaines. A specific set of James Hardie's substrates are available in 16 different colors and can be special ordered to the piece.

JamesHardie™ - PRE-FINISHED SIDING



Available Sizes:

Plank, Panel, Shingle and Batten Color Offering:



| Item | Description | Actual Size | Exposure | Pcs/Square | Unit Size |
|-------------------|-------------------------------------|---------------------------|--------------|------------|------------------|
| <i>Lap Siding</i> | <i>8.25" x 12' Cedarmil Lap</i> | <i>8.25" x 12'</i> | <i>7"</i> | <i>15</i> | <i>210</i> |
| <i>Shingles</i> | <i>Straight Edge Shingles</i> | <i>48" x 15.25"</i> | <i>7"</i> | <i>43</i> | <i>2 Squares</i> |
| <i>Shingles</i> | <i>Staggered Edge Shingles</i> | <i>48" x 15.25"</i> | <i>6.25"</i> | <i>50</i> | <i>2 Squares</i> |
| <i>Panels</i> | <i>4' x 10' Smooth Panel</i> | <i>4' x 10'</i> | <i>-</i> | <i>2.5</i> | <i>50</i> |
| <i>Panels</i> | <i>4' x 10' Cedarmill Panel</i> | <i>4' x 10'</i> | <i>-</i> | <i>2.5</i> | <i>50</i> |
| <i>Battens</i> | <i>4/4 x 2.5" Smooth Batten</i> | <i>0.75" x 2.5" x 12'</i> | <i>-</i> | <i>-</i> | <i>190</i> |
| <i>Battens</i> | <i>4/4 x 2.5" Rough Sawn Batten</i> | <i>0.75" x 2.5" x 12'</i> | <i>-</i> | <i>-</i> | <i>190</i> |

Features & Benefits:

- Statement ColorPlus Technology finishes come with a 15-year limited warranty that covers paint and labor, protecting against peeling, cracking and chipping.
- Available in job-pack and less than unit quantities



JamesHardie™ - PRE-FINISHED TRIM & SOFFIT



Available Sizes:



ARCTIC WHITE

COBBLE STONE

TIMBER BARK

IRON GRAY

MIDNIGHT BLACK

| Item | Description | Actual Size | Unit Size |
|------|----------------------------------|---------------------|-----------|
| Trim | 5/4 x 4 Smooth Trim - Statement | 1" x 3.5" x 12' | 240 |
| Trim | 5/4 x 6 Smooth Trim - Statement | 1" x 5.5" x 12' | 160 |
| Trim | 5/4 x 8 Smooth Trim - Statement | 1" x 7.25" x 12' | 120 |
| Trim | 5/4 x 12 Smooth Trim - Statement | 1" x 11.25" x 12' | 80 |
| Trim | 4/4 x 8 Smooth Trim - Statement | 0.75" x 7.25" x 12' | 156 |

| | | | |
|------|-------------------------------------|---------------------|-----|
| Trim | 5/4 x 4 Rough Sawn Trim - Statement | 1" x 3.5" x 12' | 240 |
| Trim | 5/4 x 6 Rough Sawn Trim - Statement | 1" x 5.5" x 12' | 160 |
| Trim | 5/4 x 8 Rough Sawn Trim - Statement | 1" x 7.25" x 12' | 120 |
| Trim | 4/4 x 8 Rough Sawn Trim - Statement | 0.75" x 7.25" x 12' | 156 |

| Item | Description | Actual Size | Unit Size |
|--------|------------------------------------|-------------|-----------|
| Soffit | Cedarmill Vented - Statement * | 12" x 12' | 216 |
| Soffit | Cedarmill Non-Vented - Statement * | 12" x 12' | 216 |

* Available in Arctic White, Cobble Stone, and Timber Bark

Features & Benefits:

- Pre-finished trim is available in six colors in both smooth and rough sawn trim
- Available in job-pack and less than unit quantities



JamesHardie™ - PRIMED LAP, TRIM & SOFFIT

Available Sizes:

| Primed Lap Siding | | | | |
|-------------------|------------------------------|----------|------------|-----------|
| Item | Description | SKU | Pcs/Square | Unit Size |
| Lap Siding | 5.25" X 12' Primed Cedarmill | HPLKCM5 | 25 | 360 |
| Lap Siding | 6.25" X 12' Primed Cedarmill | HPLKCM6 | 20 | 308 |
| Lap Siding | 7.25" X 12' Primed Cedarmill | HPLKCM7 | 17 | 252 |
| Lap Siding | 8.25" X 12' Primed Cedarmill | HPLKCM8 | 15 | 230 |
| Lap Siding | 9.25" X 12' Primed Cedarmill | HPLKCM9 | 13 | 190 |
| Lap Siding | 12" X 12' Primed Cedarmill | HPLKCM12 | 10 | 152 |
| Lap Siding | 5.25" X 12' Primed Smooth | HPLKSM5 | 25 | 360 |
| Lap Siding | 6.25" X 12' Primed Smooth | HPLKSM6 | 20 | 308 |
| Lap Siding | 7.25" X 12' Primed Smooth | HPLKSM7 | 17 | 252 |
| Lap Siding | 8.25" X 12' Primed Smooth | HPLKSM8 | 15 | 230 |
| Lap Siding | 9.25" X 12' Primed Smooth | HPLKSM9 | 13 | 190 |
| Lap Siding | 12" X 12' Primed Smooth | HPLKSM12 | 10 | 152 |

| Primed Trim | | | | |
|-------------|--------------------------|----------|---------------------|-----------|
| Item | Description | SKU | Actual Size | Unit Size |
| Trim | 4/4 x 2.5" Smooth Batten | 442BSSM | 0.75" x 2.5" x 12' | 360 |
| Trim | 4/4 x 2.5" Rustic Batten | 442BS | 0.75" x 2.5" x 12' | 360 |
| Trim | 4/4 x 4" Smooth Primed | 44412HT | 0.75" x 3.5" x 12' | 312 |
| Trim | 4/4 x 6" Smooth Primed | 44612HT | 0.75" x 5.5" x 12' | 208 |
| Trim | 4/4 x 8" Smooth Primed | 44812HT | 0.75" x 7.25" x 12' | 156 |
| Trim | 4/4 x 12" Smooth Primed | 441212HT | 0.75" x 9.25" x 12' | 104 |
| Trim | 5/4 x 4" Smooth Primed | 54412HT | 1" x 3.5" x 12' | 240 |
| Trim | 5/4 x 6" Smooth Primed | 54612HT | 1" x 5.5" x 12' | 160 |
| Trim | 5/4 x 8" Smooth Primed | 54812HT | 1" x 7.25" x 12' | 120 |
| Trim | 5/4 x 12" Smooth Primed | 541212HT | 1" x 11.25" x 12' | 80 |

| Primed Soffit | | | | |
|---------------|-------------------|-----------|-------------|-----------|
| Description | Description | SKU | Actual Size | Unit Size |
| Soffit | 12" Smooth Solid | HSFTSM12 | 12" x 12' | 200 |
| Soffit | 16" Smooth Solid | HSFTSM16 | 16" x 12' | 150 |
| Soffit | 24" Smooth Solid | HSFTSM24 | 24" x 8' | 100 |
| Soffit | 12" Smooth Vented | HSFTSM12V | 12" x 12' | 200 |
| Soffit | 16" Smooth Vented | HSFTSM16V | 16" x 12' | 150 |
| Soffit | 24" Smooth Vented | HSFTSM24V | 24" x 8' | 100 |



JamesHardie™ - PRIMED PANELS, SHINGLES & BACKER

Available Sizes:

| <i>Primed Panels</i> | | | | |
|----------------------|---|-----------------|------------------|------------------|
| Item | Description | SKU | Thickness | Unit Size |
| <i>Panels</i> | <i>4' x 8' Smooth Panel - PRIMED</i> | <i>HPNLSM8</i> | <i>5/16"</i> | <i>50</i> |
| <i>Panels</i> | <i>4' x 9' Smooth Panel - PRIMED</i> | <i>HPNLSM9</i> | <i>5/16"</i> | <i>50</i> |
| <i>Panels</i> | <i>4' x 10' Smooth Panel - PRIMED</i> | <i>HPNLSM10</i> | <i>5/16"</i> | <i>50</i> |
| <i>Panels</i> | <i>4' x 8' Cedarmill Panel - PRIMED</i> | <i>HPNLCM8</i> | <i>5/16"</i> | <i>50</i> |
| <i>Panels</i> | <i>4' x 9' Cedarmill Panel - PRIMED</i> | <i>HPNLCM9</i> | <i>5/16"</i> | <i>50</i> |
| <i>Panels</i> | <i>4' x 10' Cedarmill Panel - PRIMED</i> | <i>HPNLCM10</i> | <i>5/16"</i> | <i>50</i> |
| <i>Panels</i> | <i>4' x 8' Sierra 8" O.C. Panel - PRIMED</i> | <i>HPNLS88</i> | <i>5/16"</i> | <i>50</i> |
| <i>Panels</i> | <i>4' x 9' Sierra 8" O.C. Panel - PRIMED</i> | <i>HPNLS89</i> | <i>5/16"</i> | <i>50</i> |
| <i>Panels</i> | <i>4' x 10' Sierra 8" O.C. Panel - PRIMED</i> | <i>HPNLS810</i> | <i>5/16"</i> | <i>50</i> |
| <i>Panels</i> | <i>4' x 8' Stucco Panel - PRIMED</i> | <i>HPNLST8</i> | <i>5/16"</i> | <i>50</i> |
| <i>Panels</i> | <i>4' x 9' Stucco Panel - PRIMED</i> | <i>HPNLST9</i> | <i>5/16"</i> | <i>50</i> |
| <i>Panels</i> | <i>4' x 10' Stucco Panel - PRIMED</i> | <i>HPNLST10</i> | <i>5/16"</i> | <i>50</i> |

| <i>Primed Shingles</i> | | | | |
|------------------------|---|----------------|------------------|------------------|
| Item | Description | SKU | Thickness | Unit Size |
| <i>Shingles</i> | <i>Straight Edge Shingles - PRIMED</i> | <i>HSHGSE</i> | <i>1/4"</i> | <i>2 Squares</i> |
| <i>Shingles</i> | <i>Staggered Edge Shingles - PRIMED</i> | <i>HSHGSTG</i> | <i>1/4"</i> | <i>2 Squares</i> |

| <i>HardieBacker</i> | | | | |
|---------------------|---|--------------|------------------|------------------|
| Item | Description | SKU | Thickness | Unit Size |
| <i>Backer</i> | <i>1/4" 3' x 5' Hardiebacker</i> | <i>HB145</i> | <i>0.25"</i> | <i>60</i> |
| <i>Backer</i> | <i>1/2" (0.42" actual) 3' x 5' Hardiebacker</i> | <i>HB125</i> | <i>0.42"</i> | <i>50</i> |



JamesHardie™ - DREAM COLLECTION

| Item | Description | Pcs/Square | Colors |
|------------|---------------------------------------|------------|------------------|
| Lap Siding | 5.25" X 12' Cedarmill Lap - DREAM | 25 | All Dream Colors |
| Lap Siding | 6.25" X 12' Cedarmill Lap - DREAM | 20 | All Dream Colors |
| Lap Siding | 7.25" X 12' Cedarmill Lap - DREAM | 17 | All Dream Colors |
| Lap Siding | 8.25" X 12' Cedarmill Lap - DREAM | 15 | All Dream Colors |
| Lap Siding | 5.25" X 12' Smooth Lap - DREAM | 25 | All Dream Colors |
| Lap Siding | 6.25" X 12' Smooth Lap - DREAM | 20 | All Dream Colors |
| Lap Siding | 7.25" X 12' Smooth Lap - DREAM | 17 | All Dream Colors |
| Lap Siding | 8.25" X 12' Smooth Lap - DREAM | 15 | All Dream Colors |
| Lap Siding | 8.25" X 12' Beaded Smooth Lap - DREAM | 15 | All Dream Colors |

| | | | |
|----------|---------------------------------|---|------------------|
| Shingles | Straight Edge Shingles - DREAM | 1 | All Dream Colors |
| Shingles | Staggered Edge Shingles - DREAM | 1 | All Dream Colors |

| | | | |
|--------|----------------------------------|-----|------------------|
| Panels | 4' X 8' Smooth Panel - DREAM | 3.1 | All Dream Colors |
| Panels | 4' X 8' Cedarmill Panel - DREAM | 3.1 | All Dream Colors |
| Panels | 4' X 10' Smooth Panel - DREAM | 2.5 | All Dream Colors |
| Panels | 4' X 10' Cedarmill Panel - DREAM | 2.5 | All Dream Colors |

| | | | |
|---------|--------------------------------------|---|------------------|
| Battens | 4/4 x 2.5" Smooth Batten - DREAM | - | All Dream Colors |
| Battens | 4/4 x 2.5" Rough Sawn Batten - DREAM | - | All Dream Colors |

| Item | Description | Actual Size | Colors |
|------|-----------------------|-------------------|------------------|
| Trim | 5/4 x 4 Trim - DREAM | 1" x 3.5" x 12' | All Dream Colors |
| Trim | 5/4 x 6 Trim - DREAM | 1" x 5.5" x 12' | All Dream Colors |
| Trim | 5/4 x 8 Trim - DREAM | 1" x 7.25" x 12' | All Dream Colors |
| Trim | 5/4 x 10 Trim - DREAM | 1" x 9.25" x 12' | All Dream Colors |
| Trim | 5/4 x 12 Trim - DREAM | 1" x 11.25" x 12' | All Dream Colors |

| | | | |
|------|-----------------------|----------------------|------------------|
| Trim | 4/4 x 4 Trim - DREAM | 0.75" x 3.5" x 12' | All Dream Colors |
| Trim | 4/4 x 6 Trim - DREAM | 0.75" x 5.5" x 12' | All Dream Colors |
| Trim | 4/4 x 8 Trim - DREAM | 0.75" x 7.25" x 12' | All Dream Colors |
| Trim | 4/4 x 10 Trim - DREAM | 0.75" x 9.25" x 12' | All Dream Colors |
| Trim | 4/4 x 12 Trim - DREAM | 0.75" x 11.25" x 12' | All Dream Colors |

| Item | Description | Actual Size | Colors |
|--------|----------------------------------|-------------|------------------|
| Soffit | 12" Cedarmill Non-Vented - DREAM | 12" x 12' | All Dream Colors |
| Soffit | 16" Cedarmill Non-Vented - DREAM | 16" x 12' | All Dream Colors |
| Soffit | 24" Cedarmill Non-Vented - DREAM | 24" x 8' | All Dream Colors |
| Soffit | 12" Cedarmill Vented - DREAM | 12" x 12' | All Dream Colors |
| Soffit | 16" Cedarmill Vented - DREAM | 16" x 12' | All Dream Colors |
| Soffit | 24" Cedarmill Vented - DREAM | 24" x 8' | All Dream Colors |

JamesHardie™ - ARTISAN COLLECTION

The James Hardie Artisan Collections is a unique line of siding profiles that combine the quality and performance of James Hardie, with the craftsman look of classic siding profiles. Artisan is an extremely high performing siding product and very reasonably priced. It can be used for entire exterior siding, gable and dormer accents, as well as porch and patio ceilings and soffits.

Artisan V-Groove



Artisan Shiplap



Artisan Channel



Available Sizes:

| Item | FP SKU | Actual Size | Exposure | Pcs/Square | Unit Size | Texture | Finish |
|-------------------------|-----------------|----------------------------|-----------|-------------|----------------|---------------|---------------|
| <i>Artisan V-Groove</i> | <i>HPLKAVG8</i> | <i>5/8" x 8.25" x 12'</i> | <i>7"</i> | <i>14.3</i> | <i>126 Pcs</i> | <i>Smooth</i> | <i>Primed</i> |
| <i>Artisan Shiplap</i> | <i>HPLKAS10</i> | <i>5/8" x 10.25" x 12'</i> | <i>9"</i> | <i>11.1</i> | <i>105 Pcs</i> | <i>Smooth</i> | <i>Primed</i> |
| <i>Artisan Channel</i> | <i>HPLKSC10</i> | <i>5/8" x 10.25" x 12'</i> | <i>9"</i> | <i>11.1</i> | <i>105 Pcs</i> | <i>Smooth</i> | <i>Primed</i> |

Features & Benefits:

- Unique Craftsman Profiles
- Slick blind nail design for hidden fasteners
- Backed by James Hardie's proven performance and 30-year warranty
- Can be mitered for clean professional corners
- Primed and can be painted any color

JamesHardie™ - MAGNOLIA COLLECTION

The Magnolia Collection is a custom curated selection of colors hand-picked by Chip and Joanna Gaines. It features sixteen different color options that are warm and timeless to create spectacular curb appeal. Mix and match in various styles of lap siding, board and batten, and shingle to make your home uniquely you.



Available Sizes:

| Collection | Item | Finish | Actual Size | Coverage |
|------------|------------------------|---------------------|---------------------------|----------------|
| Magnolia | 5.25" x 12' Lap Siding | Smooth or Cedarmill | 5.25" x 12' (4" Exposure) | 25 Pcs/Square |
| Magnolia | 6.25" x 12' Lap Siding | Smooth or Cedarmill | 6.25" x 12' (5" Exposure) | 20 Pcs/Square |
| Magnolia | 7.25" x 12' Lap Siding | Smooth or Cedarmill | 7.25" x 12' (6" Exposure) | 17 Pcs/Square |
| Magnolia | 8.25" x 12' Lap Siding | Smooth or Cedarmill | 8.25" x 12' (7" Exposure) | 15 Pcs/Square |
| Magnolia | 4 x 10 Panels | Smooth or Cedarmill | 4' x 10' | 2.5 Pcs/Square |
| Magnolia | Batten Strips | Smooth or Rustic | 0.75" x 2.5" x 12' | - |
| Magnolia | Straight Edge Shingles | Cedarmill | 48" x 16" (7" Exposure) | 43 Pcs/Square |
| Magnolia | 5/4 x 4 x 12' Trim | Smooth or Rustic | 1" x 3.5" x 12' | - |
| Magnolia | 5/4 x 6 x 12' Trim | Smooth or Rustic | 1" x 5.5" x 12' | - |
| Magnolia | 5/4 x 8 x 12' Trim | Smooth or Rustic | 1" x 7.25" x 12' | - |
| Magnolia | 5/4 x 12 x 12' Trim | Smooth or Rustic | 1" x 11.25" x 12' | - |
| Magnolia | Solid Soffit | Smooth or Cedarmill | 16" x 12' | - |
| Magnolia | Vented Soffit | Smooth or Cedarmill | 16" x 12' | - |

Features & Benefits:

- Custom curated color selection hand-picked by Chip and Joanna Gaines
- Special order job packs. Can be ordered by the piece

HARDIE COLOR MATCH CAULK & TOUCH UP PAINT



Available Sizes:

| Color | Touch Up Paint SKU | Caulk SKU | Color | Touch Up Paint SKU | Caulk SKU |
|---------------|--------------------|-----------|-----------------|--------------------|-----------|
| ARCTIC WHITE | HPAWKP | HCAW | EVENING BLUE | HPEBKP | HCEB |
| COBBLESTONE | HPCSKP | HCCS | DEEP OCEAN | HPDOKP | HCDO |
| LIGHT MIST | HPLMKP | HCLM | MONTEREY TAUPE | HPMTKP | HCMT |
| PEARL GRAY | HPPGKP | HCPG | NAVAJO BEIGE | HPNBKP | HCNB |
| AGED PEWTER | HPAPKP | HCAP | KHAKI BROWN | HPKBKP | HCKB |
| RICH ESPRESSO | HPREKP | HCRE | TIMBEBARK | HPTBKP | HCTB |
| GRAY SLATE | HPGSKP | HCGS | MOUNTAIN SAGE | HPMSKP | HCMS |
| IRON GRAY | HPIGKP | HCIG | COUNTRYLANE RED | HPCRKP | HCCR |
| BOOTHBAY BLUE | HPBBKP | HCBB | | | |

Caulk Features & Benefits:

- OSI Quad Caulk for exterior door, window, and siding applications
- Color Matched to James Hardie Colors
- UV & Water Resistant - will not crack or yellow
- 1 tube covers 29 lineal feet at 1/4" bead width, or 13 lineal feet at a 3/8" bead width

EASYTRIM REVEALS



EasyTrim Reveals® are a two-piece aluminum trim system that snaps together to protect your siding. Compatible with a wide range of siding solutions, EasyTrim Reveals® will save you time during installation while providing best-in-class weather protection and durability for the future.

EasyTrim works best with James Hardie panel siding and provides for a fast and simple installation that provides best-in-class water management, hidden fastening, and NO CAULKING. Additionally EasyTrim is available in all James Hardie colors via special order. Builders and developers love EasyTrim because it simply works. It's easy to install, it saves their crews time, and it looks great.

Available Profiles:

| | | | |
|--------------|---|---------------|---|
| <i>EZ.1</i> | <i>1 Piece Square Outside Corner 5/16" Panel</i> | <i>EZ.24</i> | <i>2 Piece Window SLT Panel 5/16" Trim</i> |
| <i>EZ.2</i> | <i>Round Outside Corner 5/16" Panel</i> | <i>EZ.25</i> | <i>Vertical H Mold J-Trim 5/16" Panel</i> |
| <i>EZ.3</i> | <i>Inside Corner 5/16" Panel</i> | <i>EZ.28</i> | <i>1 3/8" Window Drip Cap Flashing 5/16"</i> |
| <i>EZ.4</i> | <i>Horizontal Z Trim 5/16" Panel</i> | <i>EZ.29</i> | <i>Perforated Soffit Panel 5/16" Trim</i> |
| <i>EZ.5</i> | <i>Horizontal Reveal H Trim 5/16" Panel</i> | <i>EZ.31</i> | <i>1 Piece Square Outside Corner LAP 3/4"</i> |
| <i>EZ.7</i> | <i>2-Piece Vertical U Trim 5/16" Panel</i> | <i>EZ.33</i> | <i>Arrow Outside Corner LAP 3/4"</i> |
| <i>EZ.8</i> | <i>Vertical Window Sill J Trim 5/16" Panel</i> | <i>EZ.34</i> | <i>X Outside Corner LAP 3/4"</i> |
| <i>EZ.9</i> | <i>Horizontal Soffit J Trim 5/16" Panel</i> | <i>EZ.35</i> | <i>Adjustable Outside Corner LAP (105° to 165°) 3/4"</i> |
| <i>EZ.10</i> | <i>Horizontal Base B Trim 5/16" Panel</i> | <i>EZ.36</i> | <i>Inside Corner LAP 3/4"</i> |
| <i>EZ.11</i> | <i>2-Piece Vertical U Trim 5/16" Transition</i> | <i>EZ.37</i> | <i>Adjustable Multi Angle 1/2 Corner LAP(90° to 165°) 3/4"</i> |
| <i>EZ.12</i> | <i>2-Piece Square Outside Corner 5/16" Panel</i> | <i>EZ.38</i> | <i>2 Piece Vertical U Trim LAP 3/4"</i> |
| <i>EZ.13</i> | <i>Arrow Outside Corner 5/16" Panel</i> | <i>EZ.40</i> | <i>Vertical Window Sill J Trim LAP 3/4"</i> |
| <i>EZ.14</i> | <i>X Outside Corner 5/16" Panel</i> | <i>EZ.42</i> | <i>2 Piece Arrow Outside Corner 3/4" Trim</i> |
| <i>EZ.15</i> | <i>2-Piece Adjustable Outside Corner 5/16" Panel</i> | <i>EZ.44</i> | <i>Horizontal Z 3/4" Trim</i> |
| <i>EZ.16</i> | <i>2 Piece Outside Corner Transition 5/16"</i> | <i>EZ.45</i> | <i>Adjustable Outside Corner Transition (105° to 165°) 3/4"</i> |
| <i>EZ.17</i> | <i>Inside Corner Transition 5/16"</i> | <i>EZ.46</i> | <i>Adjustable Inside Corner Transition (90° to 165°) 3/4"</i> |
| <i>EZ.18</i> | <i>Adjustable Inside Corner Panel 5/16" (90° to 165°)</i> | <i>EZ.48</i> | <i>O/S Base Z Lap 3/4"</i> |
| <i>EZ.19</i> | <i>2 Piece Vertical Window Sill U Trim 5/16" Panel</i> | <i>EZ.60</i> | <i>Vented Starter Strip 10 ft</i> |
| <i>EZ.20</i> | <i>2 Piece Vertical Termination F Trim 5/16" Panel</i> | <i>EZ.70</i> | <i>Horizontal Base B 7/16" Panel Trim</i> |
| <i>EZ.21</i> | <i>2-Piece Soffit F Trim 5/16" Panel</i> | <i>EZ.104</i> | <i>2 Piece Arrow Outside Corner 5/16" Trim</i> |
| <i>EZ.23</i> | <i>2 Piece Vertical SLT 5/16" Panel Trim</i> | <i>EZ.108</i> | <i>2 Piece J 5/16" Trim</i> |

EASYTRIM REVEAL PROFILES

5/16" TRIM SYSTEM Length: 10'

OUTSIDE CORNERS

| | | | | | | | | | | | | | |
|-------------------------------------|------------------------------------|---|------------------------------------|--------------------------------|--|--|--|--------------|--|--------------|--|---------------|--|
| EZ 1 | | EZ 2 | | EZ 12 | | EZ 13 | | EZ 14 | | EZ 15 | | EZ 104 | |
| Square Outside Corner 5/16" Trim | Round Outside Corner 5/16" Trim | 2-Piece Square Outside Corner 5/16" Trim | Arrow Outside Corner 5/16" Trim | X Outside Corner 5/16" Trim | Multi-Angle Outside Corner 5/16" Trim | 2-Piece Arrow Outside Corner 5/16" Trim | | | | | | | |

INSIDE CORNERS

| | | | | | |
|-----------------------------|---|-------------------------------------|--|--------------|--|
| EZ 3 | | EZ 18 | | EZ 27 | |
| Inside Corner 5/16" Trim | Multi-Angle Inside Corner 5/16" Trim | 2-Piece Inside Corner 5/16" Trim | | | |

UNIVERSAL TRIMS Length: 10'

WINDOW FLASHING

| | |
|------------------------------------|--|
| EZ 28 | |
| 1-3/8" Window Drip Cap Flashing | |

STARTER STRIP

| | |
|---|--|
| EZ 60 | |
| Perforated Vented Starter Strip Trim (Wry) | |

HORIZONTAL TRIMS

| | | | | | |
|----------------------------|-----------------------------------|---------------------------------|--|--------------|--|
| EZ 4 | | EZ 5 | | EZ 10 | |
| Horizontal Z 5/16" Trim | Horizontal Reveal H 5/16" Trim | Horizontal Base B 5/16" Trim | | | |

VERTICAL TRIMS

| | | | | | |
|----------------------------------|--|--------------------------|--|--------------|--|
| EZ 7 | | EZ 19 | | EZ 25 | |
| 2-Piece Vertical U 5/16" Trim | 2-Piece Vertical Window Jamb 5/16" Trim | Vertical H 5/16" Trim | | | |

J TRIMS

| | | | | | | | |
|-------------------------|------------------------|---------------------------------|--------------------------------|--------------|--|--------------|--|
| EZ 8 | | EZ 9 | | EZ 20 | | EZ 21 | |
| General J 5/16" Trim | Soffit J 5/16" Trim | 2-Piece General J 5/16" Trim | 2-Piece Soffit J 5/16" Trim | | | | |

| | | | |
|-------------------------|-----------------------------------|----------------|--|
| EZ 108* | | EZ 101* | |
| 2-Piece J 5/16" Trim | 2" Insulated Window 5/16" Trim | | |

SLIMLINE TRIMS (SLT)

| | | | | | |
|--------------------------------|------------------------------------|----------------------------------|--|--------------|--|
| EZ 22 | | EZ 23 | | EZ 24 | |
| Horizontal Z SLT 5/16" Trim | 2-Piece Vertical SLT 5/16" Trim | 2-Piece Window SLT 5/16" Trim | | | |

SOFFIT TRIM

| | | | |
|---------------------------------|---------------------------------|--------------|--|
| EZ 29 | | EZ 29 | |
| Perforated Soffit 5/16" Trim | Perforated Soffit 5/16" Trim | | |

7/16" TRIM SYSTEM Length: 10'

OUTSIDE CORNER

| | | | |
|---|-------------------------------------|--------------|--|
| EZ 62 | | EZ 63 | |
| 2-Piece Square Outside Corner 7/16" Trim | 2-Piece Inside Corner 7/16" Trim | | |

VERTICAL TRIM

| | |
|----------------------------------|--|
| EZ 67 | |
| 2-Piece Vertical U 7/16" Trim | |

HORIZONTAL TRIMS

| | | | | | |
|----------------------------|----------------------------|---------------------------------|--|--------------|--|
| EZ 64 | | EZ 65 | | EZ 70 | |
| Horizontal Z 7/16" Trim | Horizontal H 7/16" Trim | Horizontal Base B 7/16" Trim | | | |

J TRIMS

| | | | |
|-------------------------|---------------------------------|--------------|--|
| EZ 68 | | EZ 71 | |
| General J 7/16" Trim | 2-Piece General J 7/16" Trim | | |

SOFFIT TRIM

| | |
|---------------------------------|--|
| EZ 79 | |
| Perforated Soffit 7/16" Trim | |

3/4" TRIM SYSTEM Length: 10'

OUTSIDE CORNERS

| | | | | | | | |
|------------------------------------|-----------------------------------|-------------------------------|---|--------------|--|--------------|--|
| EZ 31 | | EZ 33 | | EZ 34 | | EZ 42 | |
| Square Outside Corner 3/4" Trim | Arrow Outside Corner 3/4" Trim | X Outside Corner 3/4" Trim | 2-Piece Arrow Outside Corner 3/4" Trim | | | | |

INSIDE CORNERS

| | | | |
|----------------------------|--|--------------|--|
| EZ 36 | | EZ 37 | |
| Inside Corner 3/4" Trim | Multi-Angle Inside Corner 3/4" Trim | | |

VERTICAL TRIM

| | |
|---------------------------------|--|
| EZ 38 | |
| 2-Piece Vertical U 3/4" Trim | |

HORIZONTAL TRIMS

| | | | |
|---------------------------|--------------------------------|--------------|--|
| EZ 44 | | EZ 48 | |
| Horizontal Z 3/4" Trim | Horizontal Base Z 3/4" Trim | | |

J TRIMS

| | | | |
|------------------------|----------------------------------|---------------|--|
| EZ 40 | | EZ 41* | |
| General J 3/4" Trim | 2" Insulated Window 3/4" Trim | | |

FASTPLANK ALUMINUM SIDING



Available Sizes:

Siding & Trim

| Item | Application | Size | Unit of Sale |
|-------------------------|-------------------|----------|--------------|
| 6" Plank | Siding | 6" x 16' | 6 Pcs |
| Inside/Outside Corner | Corner Trim | 12' | 1 Pc |
| Two Piece J Trim | J Trim | 12' | 1 Pc |
| Two Piece Vertical Trim | Intermediate Trim | 12' | 1 Pc |
| One Piece J Trim | Window/Door Trim | 12' | 1 Pc |
| Perforated Starter | Starter Strip | 12' | 1 Pc |



Light Cherry

Connectors

| Item | Application | Box Size |
|---------------------|----------------------------|----------|
| Wall Clip Connector | Siding Clip | 100 Pcs |
| Plank Connector | Horizontal Plank Connector | 50 Pcs |
| Plank Backer | Bottom & Top Edge Backer | 50 Pcs |
| Wood Screw #10 | Screws | 250 Pcs |



Dark Fir

Features & Benefits:

- Extraordinary long-term durability and performance
- Made with a thick and high-quality aluminum
- Fantastic design for intuitive, easy, and fast installation
- Modern colors and look
- Excellent for commercial buildings



Dark Cherry



Classic Black



Dark Walnut

TYPAR HOUSE WRAP



Available Sizes:

| Item | Actual Size | Weight/Pallet | Rolls Per Pallet | Usage |
|-----------------------|-------------|---------------|------------------|---|
| 9x100 Universal Wrap | 9'x100' | 1006 | 40 | Residential / Commercial |
| 9x150 Universal Wrap | 9'x150' | 1270 | 36 | Residential / Commercial |
| 10x100 Universal Wrap | 10'x100' | 1045 | 40 | Residential / Commercial |
| 10x150 Universal Wrap | 10'x150' | 1350 | 36 | Residential / Commercial |
| 5'x100' Drain Wrap | 5'x100' | 690 | 40 | Fast Draining (over 4 stories) |
| 10'x100' Metro Wrap | 10'x100' | 729 | 20 | Commercial |
| HD Sealant | 10.1oz | 11 | 1296 | Doors, Windows, Misc Openings |
| AT 4" Flashing | 4"x75' | 23 | 576 | Dry/Wet surfaces - 0-180 degrees F |
| AT 6" Flashing | 6"x75' | 23 | 384 | Dry/Wet surfaces - 0-180 degrees F |
| Butyl 4" Flashing | 4"x75' | 28.4 | 432 | Pliable Flashing - 30-180 degrees F |
| Butyl 6" Flashing | 6"x75' | 28.5 | 288 | Pliable Flashing - 30-180 degrees F |
| Flex Flashing 6" | 6"x75' | 27 | 72 | Curved edges, windows, sill plates, etc |
| Flex Flashing 9" | 9"x75' | 29 | 48 | Curved edges, windows, sill plates, etc |
| Tape | 1-7/8"x165' | 18 | 1152 | Corners, Joints, Seams |

Features & Benefits:

- Superior water holdout - blocks water from entering the wall cavity.
- Exceptional moisture vapor transmission (MVT) - it breathes so moisture can escape the wall cavity.
- Superior tear strength - proven to withstand heavy winds and is almost five times stronger than the leading competitive wrap.
- Optimal surfactant and UV resistance - reduces the damaging effects that oils and tannins from cedar siding, cement siding, stucco, brick, and soaps from power washing can have on the system's ability to block bulk moisture penetration; stands up to the beating sun on the job site for up to 6 months without degradation.



800.652.8247

310 S. Kitley Ave. Indianapolis, IN 46219

www.fp-supply.com